

1371 Caitlyn Cir

Westlake Village, CA 91361



Price

\$2,760,000



Beds

5



Baths

6



Property Size

4,602



Lot Size

34,544



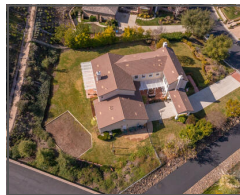
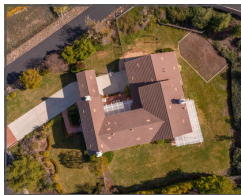
Year Built

2002



Type

Detached Home



Karen Sandvig

01507450

Coldwell Banker

(818) 941 7437

Karen.Sandvig@camoves.com



COLDWELL BANKER
REALTY

About the Property:

First time on the market! As you drive down a two-lane country road, past a small lake, you will reach the elegant and secluded guard gated community of Sycamore Canyon Estates. Nestled in the Santa Monica Mountain Reserve you'll experience gorgeous mountain views, cool breezes and 24-hour guard gated privacy. Ideally located, you're only minutes to local shopping and fabulous restaurants, 3.5 miles to the freeway, 10 miles to Malibu beaches, and 32 miles to Santa Monica. As you walk into this light and bright home, you will appreciate the marble entry, floor to ceiling windows and real wood flooring throughout the downstairs. This home offers an open floor plan, 5 bedroom en-suites, with one located downstairs along with a guest bathroom. There is an additional office loft with built in cabinets, which is perfect if you work from home or need a homework area for kids. There are 4 fireplaces, including one in the primary en-suite. The gourmet kitchen...



222000373

